

# Parameters

<b>RECOMMENDED HARDWARE</b>	Operation System CPU RAM Screen Hardware	Android 8 OS or higher Core 2.1GHz or better ≥ 3G ≥ 4.5 inches, ≥ 960*640 resolution Bluetooth, Wi-Fi/GPRS
<b>SUPPORTED DEVICES</b>	GNSS Receiver  Data Collector	SinoGNSS T-series receivers, N-series receivers, Universe-series receivers, K8-series EVK Android device with built-in GPS GNSS device that support NMEA 0183 format SinoGNSS R60,R550,P6 data collector SinoGNSS P8H P6H tablet Android device (Android OS≥8 )
<b>WORK MODES</b>	Base  Rover  Static	Internal Radio mode External Radio mode Internal GSM mode Internal Radio mode Internal GSM mode PDA CORS mode Support static data record
<b>FUNCTIONS</b>	Project Device Survey Tool	Project configuration, Datum configuration, Cloud, Code list, Import & Export, Element library ,etc. Device connection, Rover, Base, Device information, Position information, Register, etc. Topo survey, Control survey, Detail survey, Area survey, Auto survey,Stake point/line/Arc, CAD, PPK, Road design/stake, Feature survey, Surface stake, etc. Grid shift, Area calculation, Earthwork calculation, COGO, Laser Ranging,FTP, E-mail
<b>COMMUNICATION</b>	Supported protocol  Supported format Data format	Transmission Protocol: TCP, Ntrip,FTP, MQTT UHF protocol: MAC, South, TT450S, , Trintalk, Transparent, SNlonglink, SATEL Correction data: RTCM 2.X, 3.X; CMR; CMR+ GNSS data: NMEA-0183, CNB (ComNav Binary) Graphic data: *.dxf, *.dwg, *.shp, *.kml, *.raw, *.rw5, *.gpx, *.kml, *.xls,*. sim Document format: *.csv, *.dat, *.txt, *.html
<b>SUPPORTED LANGUAGES</b>	Bulgarian Chinese (Simplified) Chinese (Traditional) English French German Greek Japanese Korean	Mongolian Persian Polish Portuguese Russian Serbian Spanish Turkish Vietnamese

SinoGNSS®



# Survey Master

Field Surveying Software For Android



Ease of Use



High Compatibility



Abundant Functions



Powerful CAD engine

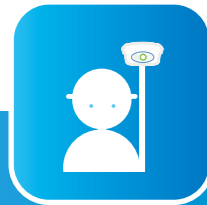
**ComNav Technology Ltd.**  
Building 2, No. 618 Chengliu Middle Road,  
201801 Shanghai, China  
Tel : +86 21 64056796  
Fax: +86 21 54309582  
Email: sales@comnavtech.com  
www.comnavtech.com



# Features

## SURVEY MASTER IS A POWERFUL, EFFICIENT, AND RELIABLE PROFESSIONAL FIELD SURVEY SOFTWARE.

It features multiple base/rover working modes. With Survey Master, you can survey through Topo survey/Auto survey, Static, and PPK modes. The software also allows you to edit and stake points/lines with ease, ensuring your survey data is as accurate as possible. Furthermore, the application provides convenient methods for importing/exporting survey data files. With support for data formats such as TXT, CSV, SHP, and AutoCAD DXF, you can seamlessly integrate your survey data with other systems and tools, delivering an exceptional user experience and making field surveying more efficient, accurate, and enjoyable.



### Ease of Use

Survey Master has user-friendly design for easy to use. Designed with wizard function, new users can follow the wizard steps to complete the whole survey workflow easily. As for professional users, Survey Master has equipped with abundant functions to satisfy various survey tasks.

### Abundant Functions

In order to work with most survey tasks and satisfy the requirements of users, Survey Master is designed with abundant functions for different work modes including RTK, PPK, static, and applications like road stake, surface stake, topo survey, feature survey and so on.

### High Compatibility

Developed with Android structure, Survey Master is compatible with most Android-based devices, such as smart phone, data collector. Moreover, with the support of NMEA protocol, Survey Master can be connected with GNSS device that can output NMEA information.

### Powerful CAD Engine

The new powerful CAD engine enhances the surveying experience with CAD map display and one-click image retrieval, facilitating quick access to relevant maps and optimizing workflow. It also supports manual and automatic nearest point staking during layout point placement, ensuring accuracy and efficiency. The robust base map loading capability improves overall performance and reliability for surveying and staking tasks.

# Survey Master for more efficient and reliable survey.

## NMEA 0183

Survey Master boasts exceptional compatibility, allowing it to seamlessly integrate with any receiver capable of outputting NMEA 0183 signals, enabling users to connect and use it effortlessly.



## Cloud

The integrated cloud architecture is designed to support remote assistance, cloud storage, sharing and many other valuable features.



## Multiple Survey Modes

Survey Master provides a multitude of survey modes, such as IMU Survey, Laser Survey, Visual Survey, and Standing Survey, enhancing the flexibility and accuracy of surveying tasks.



## Survey and Draw Simultaneously

Survey Master supports simultaneous measuring and drawing, allowing users to create real-time data visualizations while measuring, enhancing efficiency and facilitating data presentation and analysis.



## Multi-format Base Map Display

Survey Master supports multi-format basemap display, allowing users to import DXF, DWG, SHP, KML, and GPX files for map visualization, as well as support online maps from Google Maps. This enables seamless integration of survey data with various basemap formats.



## CAD

The new CAD engine features powerful base map loading capabilities. Support Stake, Drawing and Survey functions, drastically improving efficiency.



## Multiple Survey Applications

Survey Master offers multiple survey applications, including Topo Survey, Control Survey, Detail Survey, Auto Survey and Area Survey, enabling users to complete a wide range of surveying tasks efficiently and accurately.



## COGO

Survey Master's robust calculation capabilities empower users to execute a diverse array of computations, thereby facilitating precise and reliable analyses.



## Multi-format Export

Wide format compatibility ensures seamless data integration with other software or platforms, enhancing sharing efficiency and flexibility.



## GIS

The integration of code attribute functionality significantly amplifies the capabilities of GIS applications. Furthermore, customizable attributes for code creation caters to a wide range of work scenarios.

