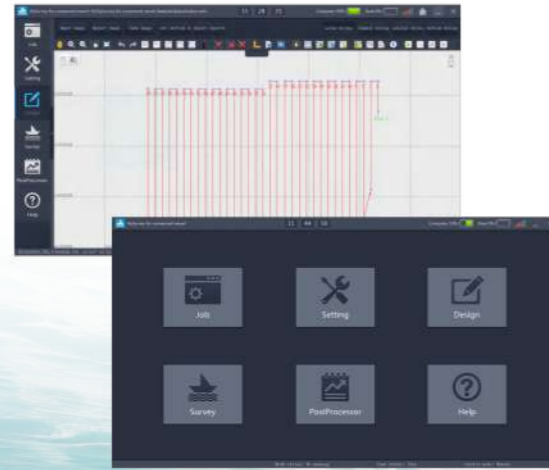


SOFTWARE

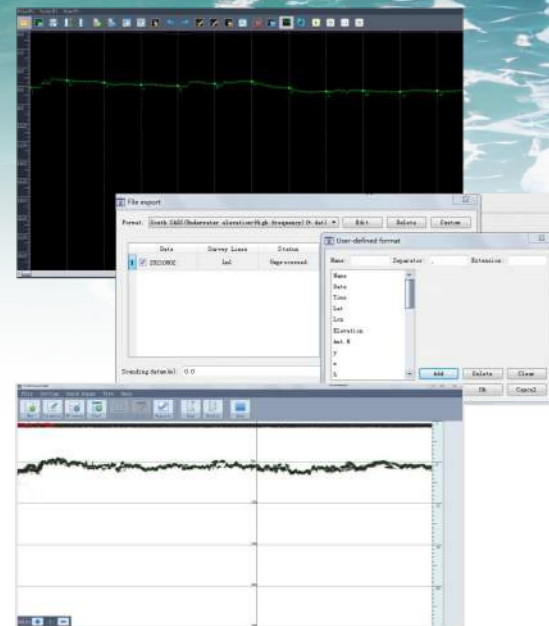
SNPilot

The SNPilot is ground control software based on a Linux system. You can customize tasks, manually control operations, monitor task progress, and input coordinate systems. The system supports automatic return in the event of low power or signal loss, with the option to set a specific return point. Additionally, it provides real-time viewing of trajectory, sounding data, waveform, and video. Data can be stored locally on the device or within the vessel for further analysis and reference.



EchoSurvey

EchoSurvey is a post-processing software. The software supports data replay, overlay of waveform depth data, depth data correction, tide correction, data delay correction, attitude correction, and coordinate parameter conversion. It allows re-sampling of collected data based on time or distance. Data can be exported in a custom format, facilitating data export and facilitating data post-processing more easily. It can display different depths in varying colors, with the capability for rollback and undo functions.



SPECIFICATIONS

Unmanned Surface Vessel

Ver.2024.10.16

Vessel Specifications

Hull Dimension(L × W × H)	1.18m x 0.7m x 0.39m
Material	Carbon Fiber Composite Material
Hull Shape	Trimaran
Water Proof & Dust Proof	IP67
Weight Without Battery	24kg
Maximum Payload	35kg
Draft	9cm
Moon Pool	23cm in Diameter (Customized)
Anti-wave & Wind	3 rd Wind Level & 2 nd Wave Level
Equipable Devices	ADCP, Water Sampling Equipment, Water Quality Meter, Sub-bottom Profiler, Side Scan Sonar, Single Beam Echo Sounder, Miniaturized Multi-beam Echo Sounder
Security Configuration	Shoal Automatic Astern, Millimeter-wave Radar Automatic Obstacle Avoidance, 360° Life Video, Dual-hull Anti-sinking Design, Rubber Bumper, Support Temperature and Humidity Detection, Indicator Light for Vessel Operation, Built-in Mounting Motor with Tangling-free Housing

Power

Battery Capacity	33V/45Ah, Li-ion Battery, Support Hot Swap
Propeller Type	Brushless DC
Direction Control	Veering without Steering Engine
Motor Power	850W (Single Motor)
Maximum Speed	3.5 knots (7 m/s)
Battery Endurance	5.5h @ 2 m/s (Single Battery) (Longer Battery Life Optional)

Communication

Transmission Range	2.5 km (Network Bridge) Unlimited Distance (4G Mode)
SIM Card Slot	Support Nano & eSIM
Video Communication	4G, Network Bridge
Data Communication	4G, Network Bridge, Radio
R/C Communication	4G, Network Bridge, Radio 2.4GHz
Data Storage	Multi-channel Storage (Remote Controller, Vessel, Server)

Remote Controller	9.2 Inches Display (Support Different Memory, Vessel Control, Data Collection, Video Viewing, Working Modes Switch)
-------------------	---

Positioning

Signal Tracking	GPS: L1C/A, L2C, L2P BDS: B1I, B2I, B3I, B2b GLONASS: G1, G2 Galileo: E1, E5b QZSS: L1C/A, L2C SBAS: L1C/A L-Band
Recapture Time	<1s
RTK Initialization Time	<5s
Velocity Accuracy	0.02m/s
Single Point Position (RMS)	≤ 1.5m (Horizontal) ≤ 2.5m (Vertical)
PPP Accuracy	≤ 10cm
RTK Positioning Accuracy	±8mm+1ppm(Horizontal) ±15mm+1ppm (Vertical)
Heading Accuracy	0.15° @1m Baseline
Roll / Pitch Accuracy	0.25° @1m Baseline
IMU Update Rate	200Hz

Single Beam Echo Sounder

Weight	0.75 kg
Sounding Range	0.3 - 300m / 900ft
Sounding Accuracy	±0.01m ± 0.1%D (D is the depth of water)
Resolution	0.01m
Frequency	200 kHz
Beam Angle	7°
Supply Voltage	9-15V DC, Less than 25w, 110-265V AC (Optional)
Water Proof & Dust Proof	IP67

AUTHORIZED DISTRIBUTION PARTNER

ComNav Technology Ltd.



Building 2, No. 618 Chengliu Middle Road,
201801, Shanghai, China

Web: www.comnavtech.com

Email: sales@comnavtech.com

Tel : +86 21 64056796

Fax: +86 21 54309582

ComNavTech



SV600

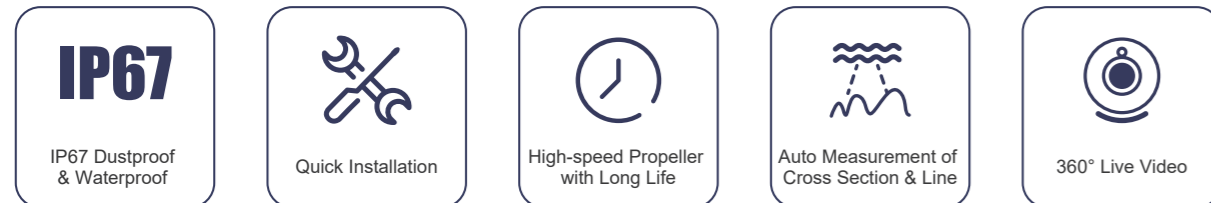
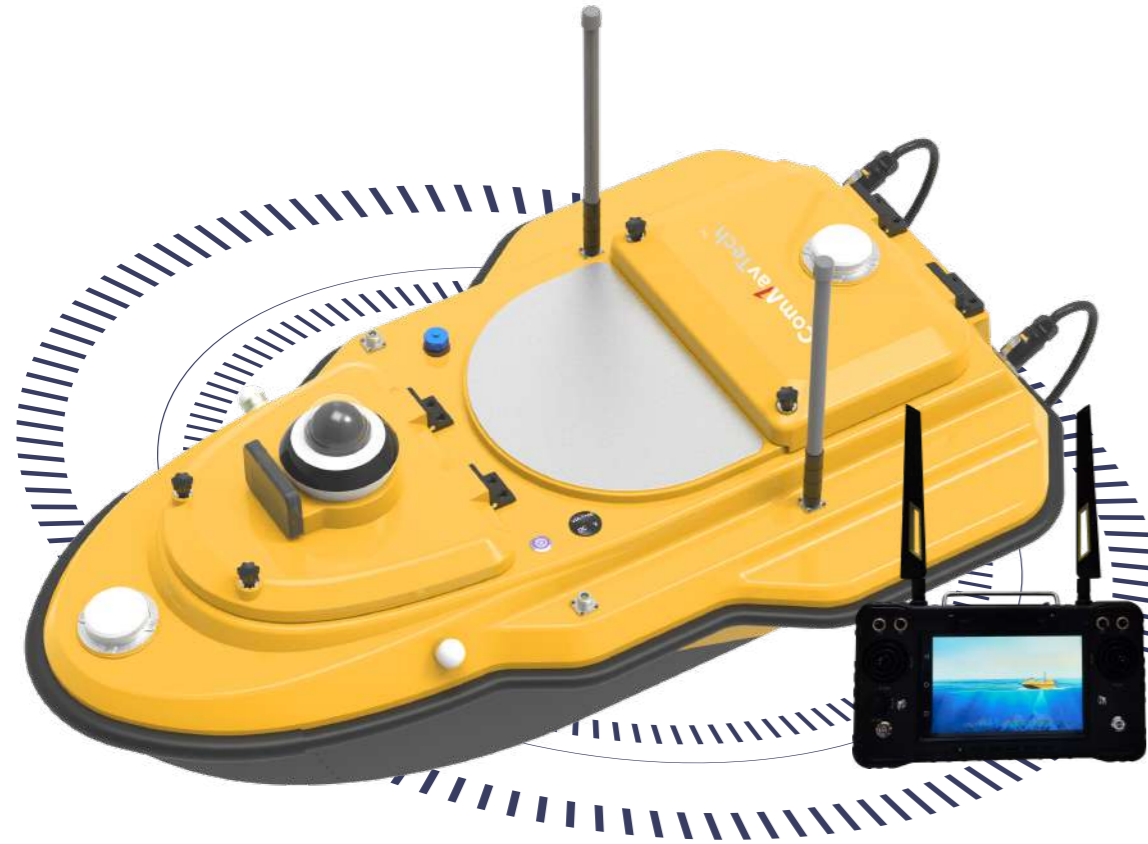
Unmanned Surface Vessel

© 2024, ComNav Technology Ltd. All rights reserved. ComNavTech is the official trade mark of ComNav Technology Ltd., registered in People's Republic of China, EU, USA and Canada. All other trademarks are the property of their respective owners. (April, 2024).

INTRODUCTION

The SV600 is an advanced Unmanned Surface Vessel (USV) specifically engineered for hydrographic surveys. Offering remote control capabilities, it seamlessly integrates adaptive water flow straight-line and hovering technology for enhanced efficiency.

Equipped with a dual-moon pool design, this vessel facilitates the simultaneous deployment of multiple payloads. From Acoustic Doppler Current Profilers (ADCP) to single-beam echo sounders (SBES), side-scan sonars, pipeline detectors, and compact multi-beam echo sounders, the SV600 enables versatile surveying capabilities. Thanks to its rapid installation feature, transitioning between missions is effortless, allowing for seamless switching between various modes of measurement operations.



FEATURE

Uninterrupted Positioning with GNSS+IMU

The SV600 is outfitted with ComNavTech's dual-antenna GNSS module, featuring full-constellation multi-frequency tracking. This enables precise positioning and navigation. With an integrated IMU, it ensures continuous availability of position data, even during temporary GNSS signal loss.



360° Live Video

With 360° real-time video technology, you can immerse yourself in the environment, enhancing navigation safety.



Streamline Design

The master control of the SV600 is highly integrated, effectively minimizing the complexity of cables within the vessel's cabin.



Vessel Battery Status Display

Checking the battery status of the vessel is as easy as pressing button, eliminating the need to open the remote controller or access the cabin.



Double Hull Design

The double hull design of the SV600 ensures its resilience against sinking and damage from unexpected impacts, safeguarding its integrity even in the face of unforeseen incidents.



Millimeter-wave Radar Automatic Obstacle Avoidance

With its advanced radar technology, the obstacle avoidance radar system ensures safe operations by detecting obstacles and providing timely alerts to users, allowing for quick and effective navigation even in low-visibility conditions.



Dual Moon Pool

With the capacity to carry payloads of up to 42kg, the dual-moon pool design provides ample space and strength to accommodate various scanning devices, offering versatility in hydrographic surveying.



Smart Remote Control

SV600 remote controller support radio and 4G connection. Its maximum communication range of network bridge is up to 2.5km. The controller is equipped with a 9.2" screen that the image captured by camera can be viewed at any time, truly enhance the utility and compatibility.

