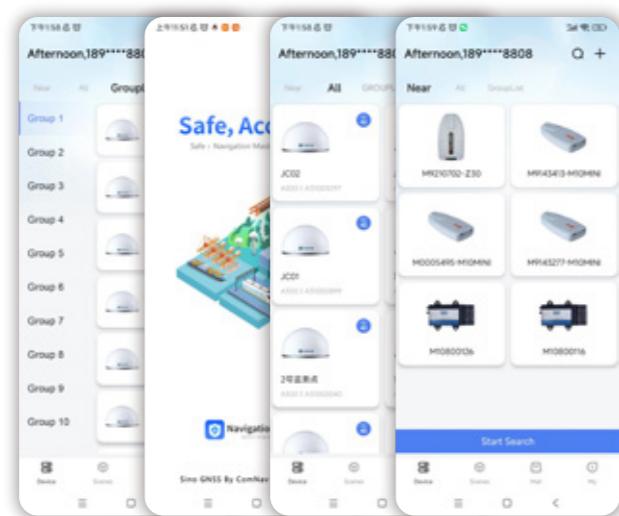


# SOFTWARE

## Navigate Master

- Android-based application supports quick configuration and status viewing.
- With measurement and stakeout function, it can measure AB line and areas.
- Support map view and real-time display.
- Support remote configuration anytime anywhere.
- Support alarm setting.



## NaviCloud

- Real time location display
- History trajectory query
- Remote control
- Electric fence
- Support customization based on customer's needs



# SPECIFICATION

### SIGNAL TRACKING

Channels	965
GPS	L1 C/A, L1C, L2C, L2P, L5
BeiDou	B1I, B2I, B3I, B1C, B2a, B2b
GLONASS	G1, G2, G3
GALILEO	E1, E5a, E5b, E6c, E5 AltBOC
QZSS	L1C/A, L2C, L5, L1C
IRNSS	L5
SBAS	WAAS, EGNOS, MSAS, GAGAN,SDCM,BDSBAS

### POSITIONING SPECIFICATIONS

Post Processing	2.5 mm + 1 ppm Horizontal 5 mm + 1 ppm Vertical
Single Baseline RTK	8 mm + 1 ppm Horizontal 15 mm + 1 ppm Vertical
DGPS	<0.4 m RMS
SBAS	1 m 3D RMS
Standalone	1.5m 3D RMS

### ELECTRICAL

Power supply	5V 2.5A DC with TYPE-C
Power consumption	<2W
Battery Capacity	5000mA, up to 10 hours

### PHYSICAL

Size	77.9mm×139mm×15.6mm
Weight	About 185g
Antenna	In-built Antenna
Indicator LED	1*Power light, 1*Satellite light, 1*Differential light
Button	1*Power button, 1*SOS button

### PERFORMANCE SPECIFICATIONS

Cold start	<50 s
Hot start	<10 s
RTK Initialization time	<5 s
Signal reacquisition	<1 s
Initialization reliability	>99.9%
Time accuracy	20 ns

### DATA FORMAT

Correction data I/O	RTCM 2X, 3.X, CMR (GPS only), CMR+ (GPS only)
Position data output	- ASCII: NMEA-0183 GSV, RMC, HDT, GGA, GSA, ZDA, VTG, GST; PTNL, PJK; PTNL, AVR; PTNL, GKG - ComNav Binary update to 20 Hz

### COMMUNICATIONS

Bluetooth® 4.0	Compatible with Android™ and Windows™ Mobile OS
4G module	Support Ntrip and Top protocol

### ENVIRONMENTAL

Working temperature	-20 °C to +60 °C
Storage temperature	-30 °C to +70 °C
Humidity	100% no condensation
Waterproof and dustproof	IP65
Shock	Designed to survive a 1m drop onto concrete

Specifications subject to change without notice.

**SinoGNSS**<sup>®</sup>  
By ComNav Technology Ltd.

# Z30

## Portable GNSS Receiver

YOUR SECURITY EXPERT  
IN THE FIELD OF HIGH-PRECISION POSITIONING



One-Click Alarm



People Location



Intelligent Management



Electric Fence



**SinoGNSS**<sup>®</sup>  
By ComNav Technology Ltd.

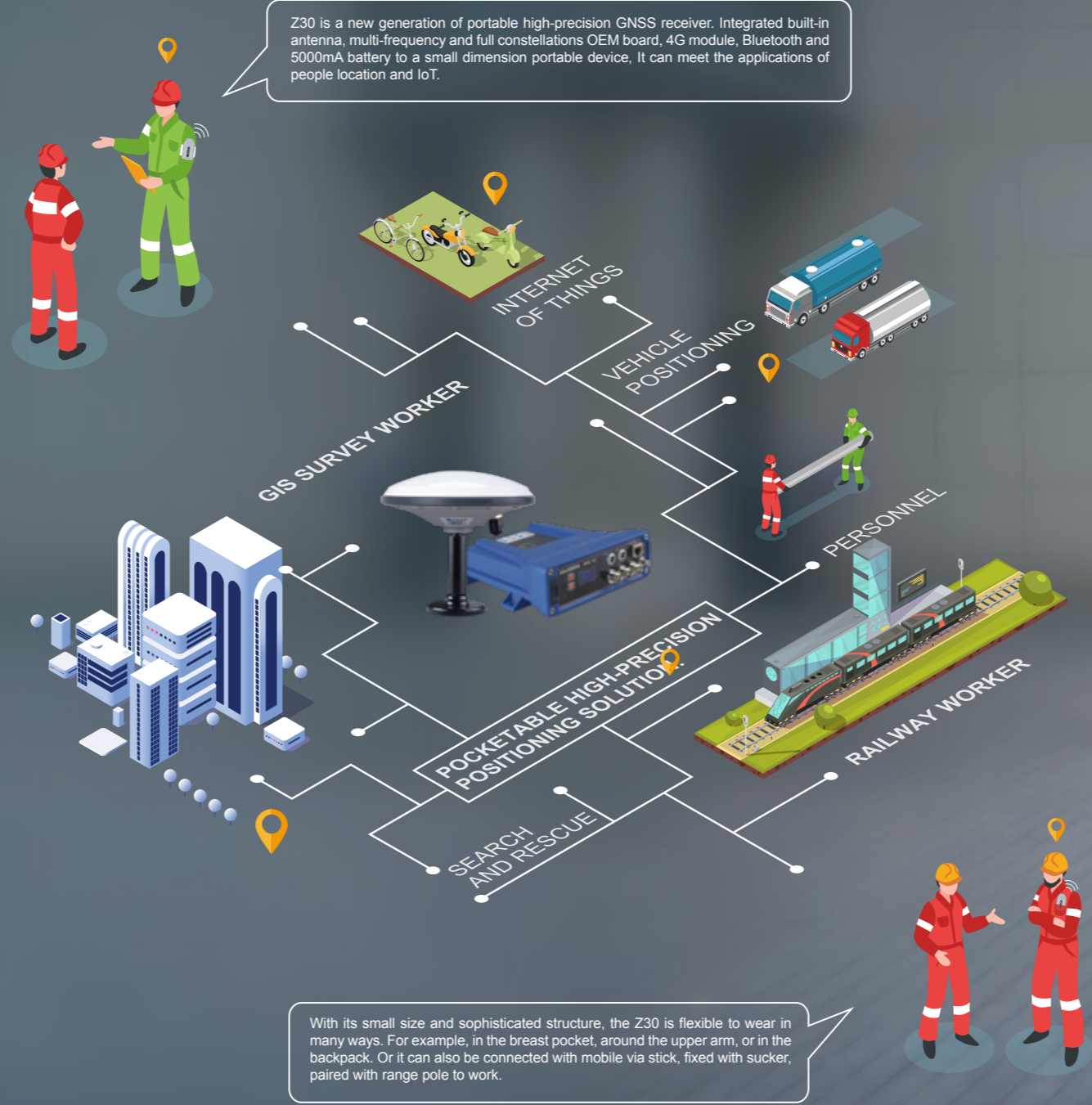
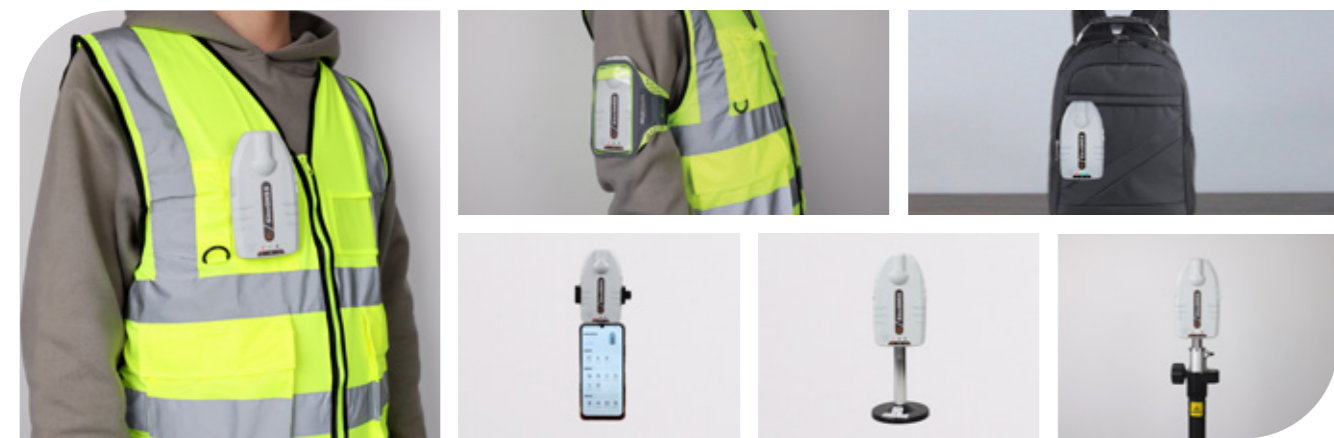
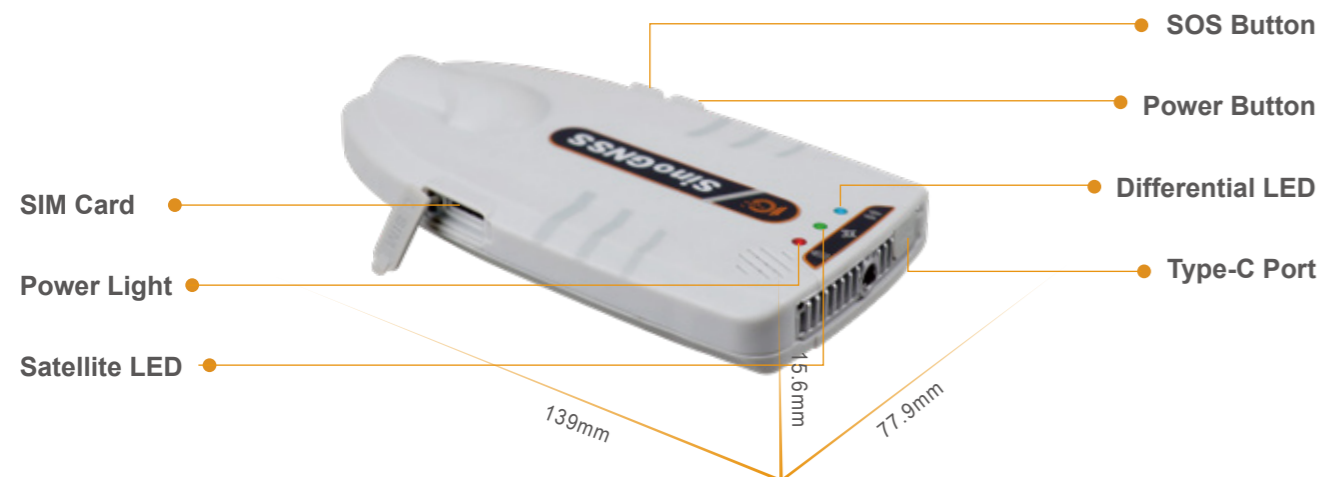
ComNav Technology Ltd.  
Building 2, No. 618 Chengliu Middle Road,  
201801 Shanghai, China

Web: [www.comnavtech.com](http://www.comnavtech.com)  
Email: [sales@comnavtech.com](mailto:sales@comnavtech.com)  
Tel : +86 21 64056796  
WhatsApp: +86 13262570280

© Copyright ComNav Technology Ltd. 2012-2023. All Rights Reserved. Unless otherwise expressly permitted by applicable copyright law, it is prohibited to reproduce or modify, in whole or in part, the content and specifications without prior consent of ComNav Technology Ltd. The specifications may be altered without any notice.

# Z30 GNSS RECEIVER

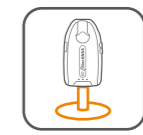
Z30 is the latest generation of portable high-precision GNSS receiver. With a built-in antenna, multi-frequency and full-constellation K803 low-power positioning module, Z30 can quickly achieve centimeter-level positioning. Also combined 4G module, Bluetooth and 5000mA battery into a small portable device, Z30 is easy to carry and install.



# FEATURES



**FULL-CONSTELLATION MULTI-FREQUENCY**  
With a built-in antenna and SinoGNSS K8 platform, Z30 can track full-constellation and multi-frequency, obtain centimeter level positioning.



**SLIM & COMPACT DESIGN**  
Z30 is as thin as a notebook. With more installation holes on jacket, it can be fixed in more ways, providing users with a more comfortable experience during using.



**SUPPORT SECONDARY DEVELOPMENT**  
Z30 can be easily used for a wide range of positioning applications by uploading the position data. It supports secondary development and has strong compatibility.



**REAL TIME TRACKING**  
Combined with NaviCloud, functions such as historical track query, electric fence, equipment management and rescue management could be achieved. It supports one-click alarm and remote location monitoring escort your personal safety.



**RUGGED HOUSING**  
IP65 waterproof and dustproof enables field work even in harsh environments. It is also designed to survive a 1m drop onto concrete.



**LONG BATTERY LIFE**  
Z30 is integrated with 5000mA battery, provides up to 10 hours operation in the field. Additionally, it can be charged with power bank

**SOS**

One-Click Alarm



People Location



Intelligent Management



Security



Electric Fence

**IP65**

Waterproof & Dustproof



Remote Configuration

**APP**

APP fast access