

Software

Survey Master

Compatible with most of Android devices

Easier survey workflow via Wizard function

Support up to 60° IMU tilt compensation

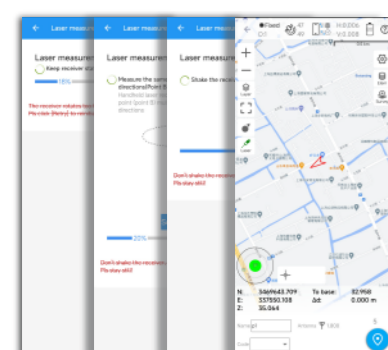
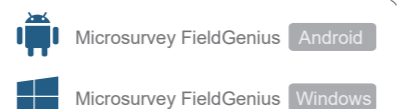
Support all survey modes, including Static, PPK and RTK

Support Surface Stake, Mapping Survey and etc. to serve various survey tasks

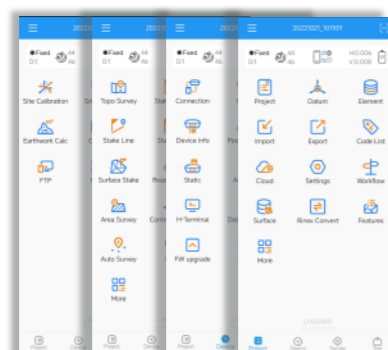
Support CAD import and directly use for stake out operations

Support Convert function from ComNavBinary raw file to RINEX

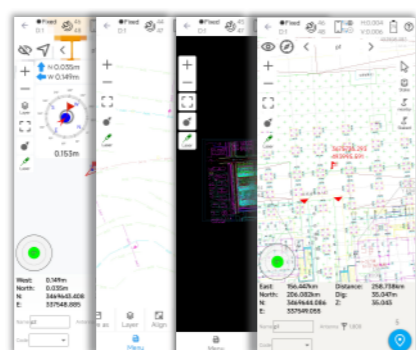
Optional



IMU Tilt Survey



New Interface



CAD Basemap and Stake

Post-processing Software

SinoGNSS Compass solution software

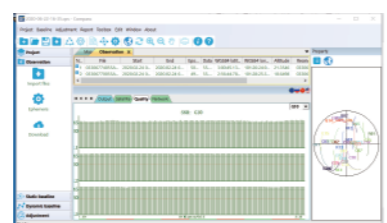
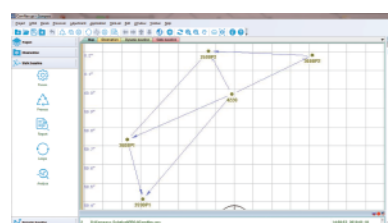
Provide the complete GPS/GLONASS/BeiDou/GALILEO post-processing solution

Support GNSS observation data in RINEX and ComNav Raw Binary Data format

Support different post-processing in static and kinematic modes

Output analysis reports in various formats (web format, DXF, TXT, KML)

Supports DJI's P4R data format. Processing results can be imported into photogrammetry and 3D modeling software directly



T20 Palm RTK

GNSS Surveying System

RU Ver.2024.05.24

Signal Tracking

Channel: 1590
 GPS: L1C/A, L1C, L2P, L2C, L5
 BDS: B1I, B2I, B3I, B1C, B2a, B2b
 GLONASS: G1, G2, G3
 Galileo: E1, E5a, E5b, E6c, E5 AltBOC
 QZSS: L1C/A, L2C, L5, L1C
 IRNSS: L5
 SBAS: L1C/A

Performance Specification

Signal Re-acquisition ≤ 1s
 Cold Start: ≤ 45s
 Hot start: ≤ 15s
 RTK Initialization Time: < 10s
 Initialization reliability: ≥ 99%
 Internal Memory: 8GB

Mode	Accuracy
Single Baseline RTK	8mm+1ppm Horizontal 15mm+1ppm Vertical
Static and Fast Static	2.5 mm + 0.5 ppm Horizontal 5 mm + 0.5 ppm Vertical
Long Observation Static	3 mm + 0.1 ppm Horizontal 3.5 mm + 0.4 ppm Vertical
DGPS	< 0.4 m RMS
SBAS	0.5m Horizontal 0.8m Vertical
Standalone	1.5m 3D RMS

Tilt Survey: up to 60° tilt with 2.5cm accuracy
 Data Update Rate: 1Hz, 2Hz, 5Hz, 10Hz

Data Format

Correction data I/O: RTCM 2.X, 3.X, CMR (GPS only), CMR+ (GPS only)
 Position data output: - ASCII: NMEA-0183 GSV, RMC, HDT, GGA, GSA, ZDA, VTG, GST; PTNL, PJK; PTNL, AVR; PTNL, GGK
 -ComNav Binary update to 20 Hz

Electrical Specification

Voltage: 5/9V
 Power Consumption: RX mode ≤ 1.8W, TX mode ≤ 3.6W
 Over Current Protection Voltage: 30V, VBUS 9.99V
 Charging Time: < 5h (QC2.0)
 Working time: up to 13h typically

Interface

Serial Port: Support serial communication
 USB: Type-C
 Range Pole interface: Standard 5/8" UNC female thread
 Datalink port: TNC

Communication

BT5.0 Dual-Mode BT
 Datalink: -Tx/Rx with full frequency range from 410-470MHz
 - Transmit power: 0.5W, 1W, 2W adjustable
 - Air Baud Rate: 9600 / 19200 adjustable
 - Range²: 3-5 km
 - Protocol type: Transparent/TT450S/South/Mac

Environmental

Working Temperature: -45 C ~ +75 C
 Storage Temperature: -40 C ~ +85 C
 Humidity: 100% non-condensing
 Water- & Dustproof: IP68
 Shock: Survive a 2m drop onto the concrete

Physical

Housing Material: Magnesium aluminum alloy
 Dimension: 149±1mm(φ), 48±1mm(H)
 Weight: 670g

Software

Survey Master Android-based data collection software
 MicroSurvey FieldGenius field data collection software (optional)

1.8GB is the default internal memory and optional 16GB, 32GB is available to order. Please clarify when placing the order.

2. Working distance of internal datalink varies in different environments, the maximum distance is 5km in ideal situation.

Specifications subject to change without notice.



T20 Palm RTK

T Series GNSS Receiver

LIGHTER, THINNER, FASTER
 A Decade of Innovation, A RTK of Originality

ComNav Technology Ltd.

Building 2, No. 618 Chengliu Middle Road,
 201801 Shanghai, China

Tel : +86 21 64056796
 Fax: +86 21 54309582
 Email: sales@comnavtech.com
 www.comnavtech.com



© 2023, ComNav Technology Ltd. All rights reserved. SinoGNSS is the official trade mark of ComNav Technology Ltd., registered in People's Republic of China, EU, USA and Canada. All other trademarks are the property of their respective owners. (March, 2023).

T20 Palm RTK

FULL-CONSTELLATION & FULL-FREQUENCY TRACKING

With 1590 channels and 50+ satellite tracking capabilities, T20 has excellent performance under harsh conditions.

SATELLITE TRACKING			SATELLITE TRACKING		
	GPS	L1C/A, L1C, L2P, L2C, L5		Galileo	E1, E5a, E5b, E6c, E5 AltBOC
	BDS	B1I, B2I, B3I, B1C, B2a, B2b		QZSS	L1C/A, L2C, L5, L1C
	GLONASS	G1, G2, G3		IRNSS	L5

PETITE RECEIVER

The slim-line design is refined to be only 48±1mm and 670g. With highly integrated main board and three-in-one antenna, it can be grasped on hand like a book.



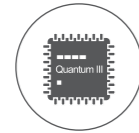
Strong Compatibility

As the compatibility of datalink, it is compatible with mainstream brands, so as to reach wider users.



STRONGER PERFORMANCE

Integrated SinoGNSS K8 high-precision module and third generation IMU, T20 can reach high accuracy even in harsh environments, ensuring the quality of work.



LONGER BATTERY LIFE

The 10000mA high-capacity lithium battery inside can be quickly charged within 5 hours and can work continuously up to 13 hours.



NFC FAST CONNECTION

T20 Palm RTK can be connected automatically with a single touch.



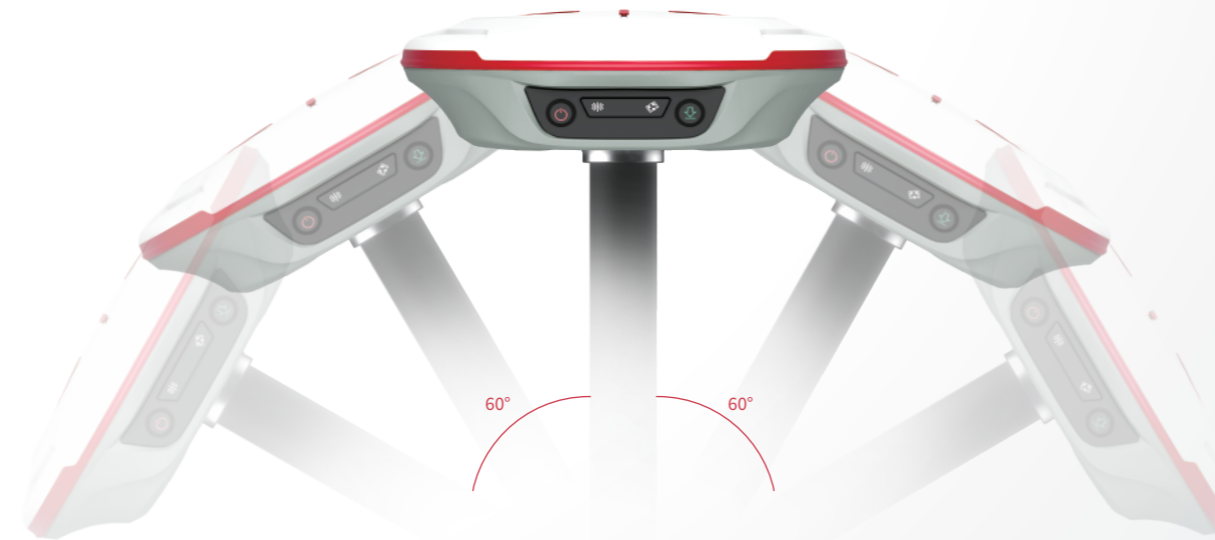
RUGGED HOUSING

Magnesium-aluminum alloy housing IP68 waterproof and dustproof level. Survive a 2m drop onto concrete.



In-built IMU supports 60° tilt compensation. Get precise measurement results without the bubble check.

EASIER 60°IMU Compensation



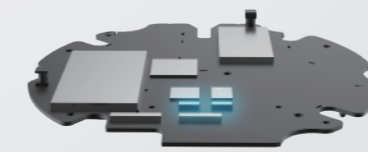
As the compatibility of the datalink module, it can meet the Once calibrated, tilt measurements with centimeter level accuracy last a long time, which improves the working efficiency.

MORE EFFICIENT 10 Seconds Initialization



Self-developed core algorithm and built-in IMU ensure accuracy within 2.5cm. Magnetic fields are no longer issues, making surveying more convenient.

STRONGER Unafraid of magnetic interference



R60 Data Collector

5.5 inch sunlight readable screen
1080P HD display

Patent for design,
ergonomic operation

With advanced **NFC**,
tedious matching is a
thing of the past

9000mAh Li-Polymer Battery
for continuously working **30+**
hours
QC3.0, 0.5h charging
enables all-day use

Survive a 1.6m drop onto the
concrete
Anti-static design, excellent
heat dissipation

Physic **full QWERTY** keyboard
speeds up working efficiency

5.0 Dual-mode Bluetooth, ultra long
range Bluetooth connection

Qualcomm 8-core
processor **Android 12**
operation system
with **GMS** certificate

4+64GB Memory
Open CAD drawing in seconds

