

| GNSS antenna

AT195-Helix antenna



The compact-sized AT195 helix antenna is designed with high stability and repeatability at phase center, and its high gain ensures a superior performance even at low elevation angle. Available from single frequency to triple frequency, support GPS L1/L2/L5, GLONASS L1/L2, BeiDou B1/B2/B3, BeiDou Global B1C/B2a, Galileo E1/E5a/E5b/E6 and SBAS. AT-series Helix antennas are optimal for Unmanned Aerial Vehicle, GIS, RTK and related mobile devices where need high accuracy GNSS positioning.

AT360-Geodetic antenna

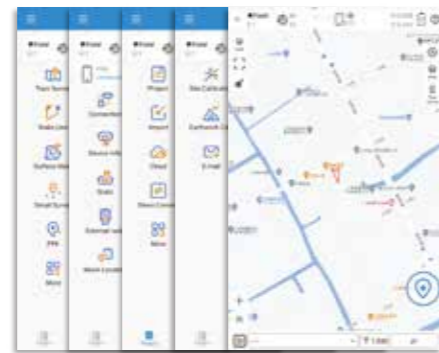
The AT360 is a super performance GNSS Antenna that can track GPS L1/L2/L5, GLONASS L1/L2, BeiDou B1/B2/B3, BeiDou Global B1C/B2a, Galileo E1/E5a/E5b/E6, L-Band and SBAS. Its high gain and wide beam provide good signal tracking performance even satellites at low elevation angle. It is a good choice for customers to develop systems or solutions for land survey, agriculture, construction and deformation monitoring.



| Software

Survey Master

- Specially designed version, perfectly adapted to P8H
- Easier survey workflow via Wizard function
- Support all survey modes, including Static, PPK and RTK
- Access to real-time open street maps
- Support CAD import and directly use for stake out operations
- Collect users' feedback through Cloud Service
- Provide mock location to third-party GIS software



Survey Master Download for free

P8 GNSS Tablet High Precision Version

Performance

CPU	Qualcomm SDM4350 2.0GHz
OS	Android12
ROM	128GB
RAM	6GB
TF Card	Y
Rear Camera	13M
Front Camera	5M
Battery	8000mAh
Battery Working Time	10hrs

Physical

Size	235mm*146mm*13mm
LCD	8" HD 1280*800 500Nits (Sunlight readable)
Touch Panel	Capacitive screen, support glove/wet hand
Flash Light	Y
Microphone	Y
Speaker	Y
Weight	630g
Voltage	5V, 2A
Keypad	Power, Volume, F1, F2, Home, Menu, Return

Communication

WiFi	802.11 a/b/g/n/ac, 2.4GHz/5GHz
SIM Card	Dual sim & Dual standby
Network	GSM:850/900/1800/1900 EVDO: BC0 WCDMA: B1/B2/B5/B8 TD-SCDMA: B34/B39 TDD-LTE: B34/B38/B39/B40/B41 FDD-LTE: B1/B2/B3/B4/B5/B7/B8/ B12/B20/B28 5G NR: N1/N3/N28/N41/N78/N79
Bluetooth	BT 5.1
USB	Type C
External Interface	USB, UART, GPIO
Support Protocols	Ntrip

Optional accessories

- Bracket for P8H
- SinoGNSS bag

GNSS Specifications

Channels	965
Satellite Tracking	- GPS:L1C/A, L2P, L2C, L5, L1C - BeiDou: B1I, B2I, B3I, B1C, B2a, B2b - GLONASS: L1, L2, L3 - Galileo: E1, E5b, E5a, E6, AltBoc - QZSS: L1C, L2, L5, L1C/A - SBAS: L1
Single Baseline RTK	8 mm + 1 ppm Horizontal 15 mm + 1 ppm Vertical
Standalone	1.5 m 3D RMS
Post Processing	2.5 mm + 1 ppm Horizontal 5 mm + 1 ppm Vertical

Sensors

NFC	Y
G Sensor	Y
Gyroscope	Y
Light Sensor	Y
Compass	Y
OTG	Y

Environmental

Work Temperature	-20 C ~ 60 C
Storage Temperature	-30 C ~ 70 C
Waterproof & Dustproof	IP67
Drop Test	Survive from a 1.2m drop
Humidity	95% no condensation

Software

- SinoGNSS High-Precisionconfiguration software
- Compatible with common third-party GIS software, such as ArcGIS Collector, Mapit GIS, FieldGenius Android etc.
- SinoGNSS Survey Master field software

P8 GNSS Tablet High Precision Version

PORTABLE & PRECISE
FOR BOTH GIS & RTK TASKS



K803 inside



| Features

P8H is a professional GNSS tablet with full constellations and multi-frequency. Integrated high-performance K803 GNSS module, with helix/geodetic antenna, it can deliver centimeter-level positioning in RTK mode without external equipment, bringing a revolution to both GIS and RTK measurement. With flexible communication, rugged housing, great compatibility and strong performance, P8H provides users with a cost-effective & high-efficiency surveying solution.



Screen: 8" sunlight readable screen, comfortable viewing experience.

Software: Android 12 GMS certified, compatible with popular GIS software.

Battery: 8000mAh large battery, long working time.

Housing: IP67 waterproof and dustproof, strong resistance.

Hardware: Integrated new generation high-accuracy K8 module, capable of reliable positioning.

Communication: Integrated 4G LTE, WIFI and Bluetooth 5.1, easy to connect.

| One device, two choices

High portability GIS solution



Use P8H for GIS is easy, convenient and accurate for feature measurement. Revolutionary lightening the burden of GIS measurement.

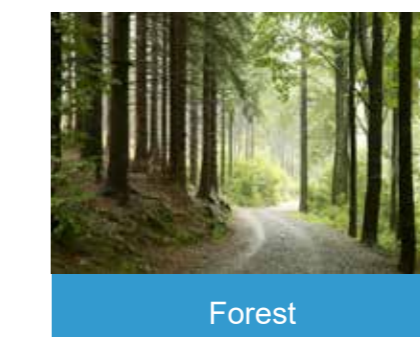
Cost-effective RTK solution



Use P8H for RTK is compact, integrated and obtained with centimeter-level accuracy. Creatively make the integration of satellite positioning so precise.

| Applications

GIS:



Surveying and mapping:

