

# SPECIFICATIONS

GNSS Tablet

Ver.2024.3.1

## Performance

CPU	8-core processor 2.0GHz
Operating System	Android 11
ROM	64GB(128GB optional)
RAM	4GB(6GB optional)
Extension	1 Mirco SD card slot up to 128G
Rear Camera	13M
Front Camera	5M
Battery	6600mAh built-in battery

## Physical

Size	165.5 * 81.6 * 29.1mm
LCD	6"HD screen, 2160*1080 resolution
Touch Screen	Capacitive multi-touch, 5 points
Flash Light	Y
Microphone	Y
Speaker	Front dual stereo 90dB±3dB(at 10cm)
Weight	310g
Charging	Quick Charge
Keypad	1*Power, 1*HOME, 1*Return, 1*Position

## Communication

WIFI	IEEE 802.11 a/b/g/n/ac, 2.4GHz/5GHz
SIM Card	2 Nano-SIM Card slots Dual SIM & Dual Standby
Network	FDD-LTE B1/B3/B5/B7/B8 TDD-LTE B38/B39/B40/B41 TDSCDMA B34/B39 WCDMA B1/B2/B5/B8 GSM B2/B3/B5/B8 CDMA 1x/CDMA2000 BC0/BC1
Bluetooth	BT 5.0 BLE
USB	Type C, support OTG
External Interface	USB, OTG

## GNSS Specifications

Channels	1590
Satellite Tracking	GPS: L1C/A, L2P, L2C, L5, L1C BeiDou: B1I, B2I, B3I, B1C, B2a, B2b GLONASS: L1, L2, L3 Galileo: E1, E5b, E5a, E6c E5 AltBOC QZSS: L1C, L2, L5, L1C/A IRNSS: L5 SBAS: L1C/A
Single Baseline RTK	8 mm +1 ppm Horizontal 15 mm + 1 ppm Vertical
SBAS	0.5m Horizontal 0.8m Vertical
Standalone	1.5m 3D RMS
Post Processing	2.5 mm +1 ppm Horizontal 5 mm + 1 ppm Vertical
PPP( B2b & HAS )	20cm Horizontal

## Sensors

G Sensor	Y
Magnetometer	Y
Light Sensing Sensors	Y

## Environmental

Work Temperature	-20°C ~55°C
Storage Temperature	-30°C ~70°C
Waterproof & Dustproof	IP67
Drop Test	Survive from a 1.2m drop
Electrostatic Protection	± 15kv air discharge, ± 8kv contact discharge
Humidity	95% non-condensing

## Software

SinoGNSS High-Precision configuration software
Compatible with common third-party GIS software, such as ArcGIS Collector, Mapit GIS, FieldGenius Android etc.
SinoGNSS Survey Master field software

**SinoGNSS**<sup>®</sup>  
By ComNav Technology Ltd.



# P6H

# HANDHELD

ComNav Technology Ltd.



Building 2, No. 618 Chengliu Middle Road, 201801, Shanghai, China

Web: [www.comnavtech.com](http://www.comnavtech.com)

Email: [sales@comnavtech.com](mailto:sales@comnavtech.com)

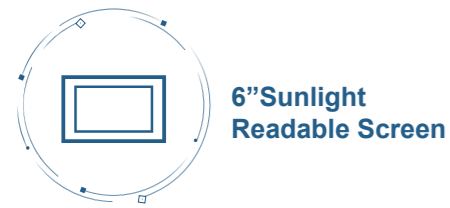
Tel : +86 21 64056796

Fax: +86 21 54309582



# P6H HANDHELD

The P6H Handheld is an advanced, rugged device tailored for Geographic Information System (GIS). Equipped with SinoGNSS self-developed high precision K8 board and antenna, it tracks all running and planned constellations, including GPS, BDS, GLONASS, GALILEO, QZSS, IRNSS and SBAS. Its accuracy remains at centimeter or decimeter level. Its portability and durability make it reliable even in harsh conditions.



6" Sunlight Readable Screen

Integrated High Precision GNSS Module and Antenna



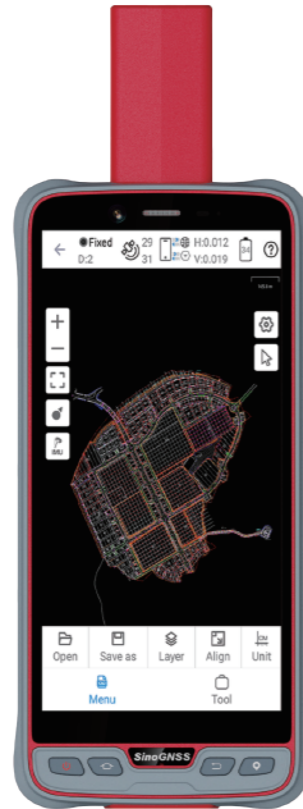
Android™ 11

Integrated 4G LTE, WIFI and Bluetooth 5.0 BLE



IP67 Dustproof and Waterproof

Compatible with common GIS software



**ACCURACY**



Employing RTK technology can grant the P6H an accuracy of 8 millimeters in the horizontal dimension and 15 millimeters in the vertical dimension.

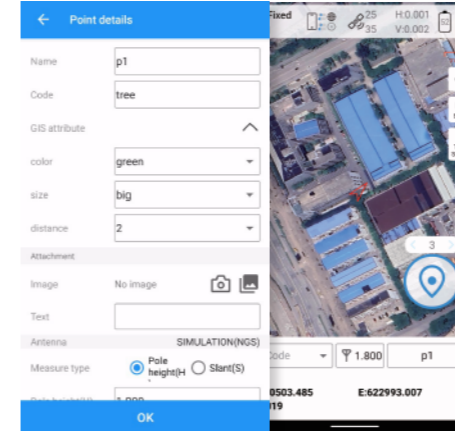


It supports PPP-HAS and PPP-B2b. In most of globe, it can access to positioning accuracy of 20cm without requiring any additional correction input or internet connectivity.



It supports WAAS, EGNOS, MSAS, GAGAN, SDCM and BDSBAS. Its accuracy is up 0.5m horizontally and 0.8m vertically. durability make it reliable even in harsh conditions.

# SOFTWARE



## Survey Master

GIS function allow users to take measurements of geographic elements and store the results as attribute data for subsequent analysis, calculation, and visualization. It also includes a Mock Location function, allowing the sharing of Survey Master's accurate position with P6H. This enables third-party GIS software to access the same accurate position data. The function is suitable for users who prefer some third-party software rather than Survey Master, then can take it and their own software to conduct work.

Compatible with common third-party GIS software, such as



ArcGIS Collector

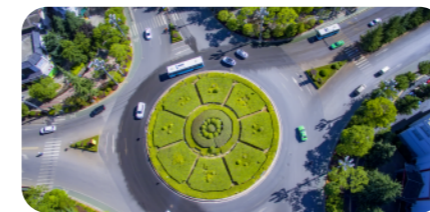


Mapit GIS



QField

# APPLICATION



Urban Planning & Management



Natural Resource Management



Emergency Response & Disaster Management



Geography & Environmental Science Research



Agriculture & Food Security



Navigation & Location-based Services